

DSV CURTIS MARSHALL

26m Dive Support Vessel



B MARSHALL MARINE LTD



Charter Vessel Specification - Curtis Marshall

B Marshall Marine Ltd, Graving Dock, Dockside Road, Middlesbrough, TS3 8AT

Tel. 07734 230496

Email: enquiries@bmarshallmarine.co.uk

Web: www.bmarshallmarine.com



01

GENERAL INFORMATION

Build in the UK, the DSV Curtis Marshall was designed specifically for renewable energy, dive support, survey work and general repair/maintenance.

NAVIGATION EQUIPMENT

Chart Plotter Radar	FURUNO MFDBB NAVNET 3D MULTIFUNCTIONAL SYSTEM FURUNO DRS12A 12kw 6ft open array - back up stand alone 1835 19"
AIS	FURUNO FA-150 CLASS A
Sounder	FURUNO BBDS1 - 1KW TRANSDUCER
Autopilot	FURUNO NAVPILOT 700
NAVTEX	FURUNO NX700A with printer
INMARSAT	FURUNO FELCOM 18 INMARSAT C EARTH STATION
Instruments	RO WIND Ultrasonic Wind Speed & Direction
EPIRB & SART	ACR 3 Pathfinder SART, ACR Globalfix Pro 406MHz EPIRB
VHF	FURUNO FM9800S Class A Transceiver, ICOM 323 VHF 2 x JOTRON TRON TR20 Portabl GMDSS

VESSEL PARTICULARS

Classification	MGN 280 - MCA Category 1
Length	150 miles from Safe Haven
Beam	26m - 24m Waterline
Draught	7.8m
Displacement	2.8m
Deck Area	184 tonnes light ships
Endurance	Main deck 75m ²
	14 to 21 days

TANK CAPACITIES

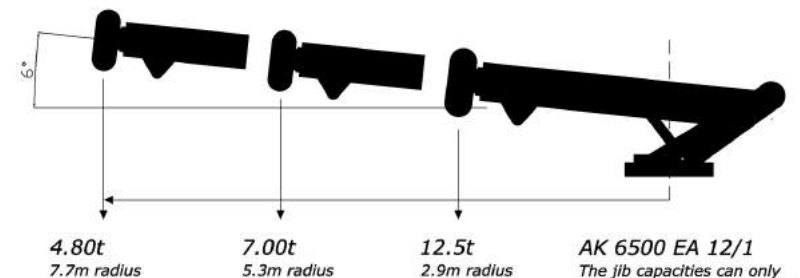
Fuel Capacity	13.5m ³
Fresh Water	21m ³
Hydraulic Oil	500l
Grey Water	2.5m ³
Black Water	2.5m ³

ENGINES & PROPULSION

Main Engines	2 x Doosan 4V158TIH coupled to Dongi Gearbox @ 5:1 ratio
Generator 1	Doosan AD066TI coupled to MeccAlte Alternator - 110 Kva
Generator 2	Doosan AD066 coupled to MeccAlte Alternator - 45 Kva
Hydraulic Power	2 x Engine mounted 130cc & Generator driven 147cc load sensing 280 Bar system - 400l/min
Fuel System	2 x 5,500l main tanks with CJC fed 2,00 litre day tank
Bow Thruster	KORT KT120 - 800kg thrust 120kw
Steering System	2 x Engine mounted hydraulic pumps - Kobelt FFU control
Propulsion Control	Forward and Aft steering stations with full walkabout control
Speed	Economical - 10 knots - Max 13 knots
Fuel Consumption	100l/hr @ 11 knots

LIFTING CAPABILITIES

Main Crane	ATLAS EK6500 tonne column mounted Walkabout control system (operate from Aft deck, upper deck or dive control)
A Frame	6 tonne - 2.4m internal clearance, 3.5T A-Frame mounted winch
Deck Winch	Rotzler 25 tonne dual speed hydraulic winch
Crane Max Lift	4 Drop Hook for Max Load Conditions - 12.5 tonne Single Drop Hook for Subsea Lifts 3 tonnes



NB- SWL restricted to 3.0t with single fall hook and 2.0t when fully extended over the port side





02

VESSEL LAYOUT

An on-board decompression chamber, integrated dive control, ballast transfer capability and a four point mooring system provide a safe and reliable working platform.

Unique Bow Fender Assembly

Designed specifically for the offshore wind market, the vessel is equipped with a bespoke design bow fender for engaging with the wind turbine fender. Since launch, the vessel has been proven in safely accessing surf ladders, in conjunction with Dive Support operations.

Ballast Water Transfer System

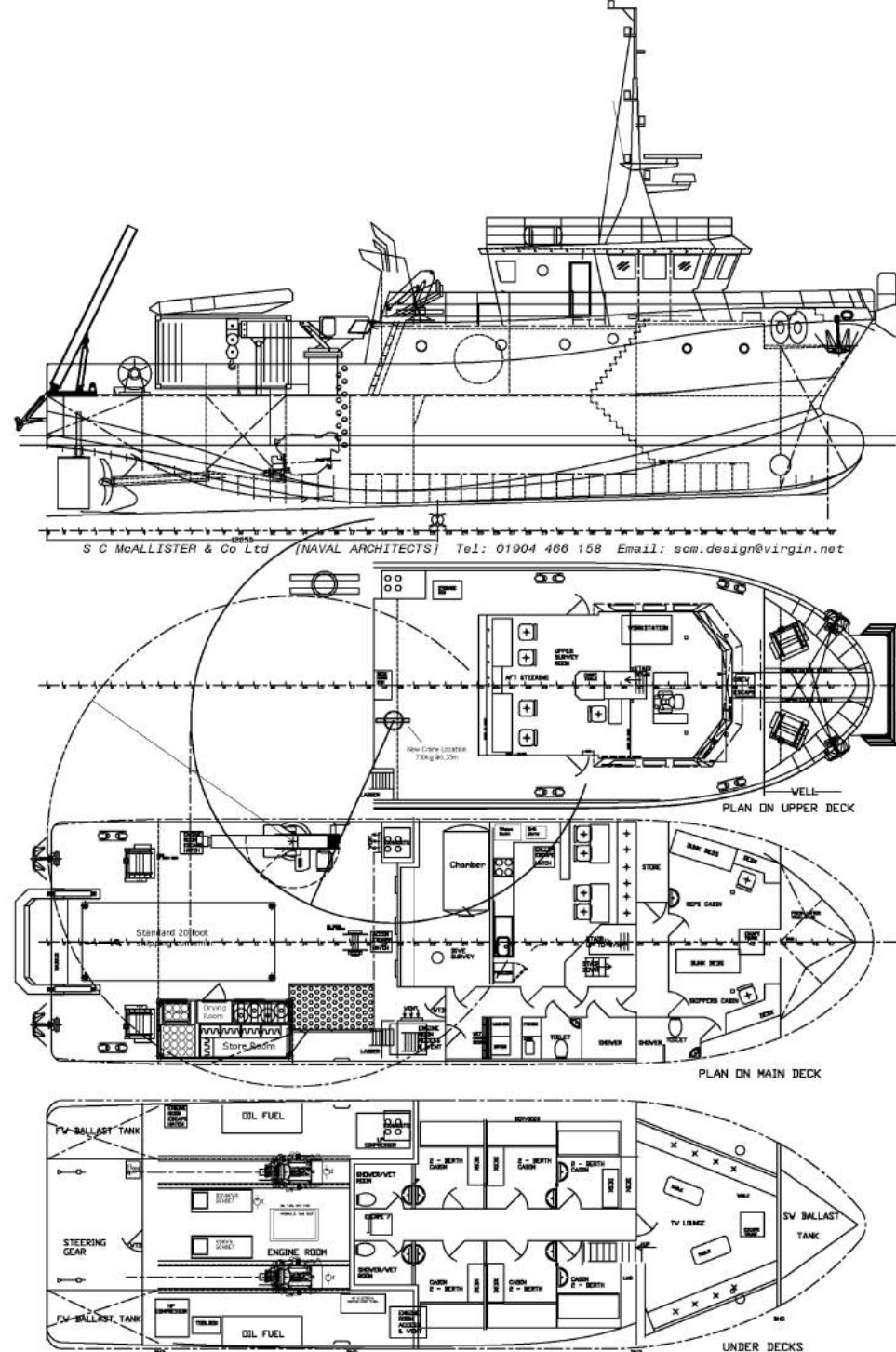
With a fresh water capacity of circa 25,000 litres, water can be transferred between either of the two aft tanks and the forward tank.

5 Tonne Lift Capacity

The location of the Atlas crane on the port side of the main deck allows DSV Curtis Marshall to lift 5T over the side of the vessel. The system is typically rigged with a Single Drop Hook with a 3 tonne capacity, but can be mobilised with a 4 Drop Hook configuration providing 5 tonne over the side.

Full Walkabout Vessel Control

Bespoke walkabout control system detachable from the helm position which can control all four mooring winches, steering, propulsion and bow thruster.



PRINCIPAL DIMENSIONS
 LENGTH OVERALL 25.8 METRES
 LOAD LINE LENGTH 23.95 METRES (ON 0.85D VL)
 BREADTH O/D 7.7 METRES
 DEPTH O/D 3.6 METRES
 DRAUGHT APPROX 2.8 METRES

UNDER 24 METRES LOAD LINE LENGTH

This drawing is copyright and must not be copied or used for any purpose without the express written consent of S C McAllister & Co Ltd.

26x7.7 METRE DIVE SUPPORT VESSEL
 For: B Marshall Marine Ltd
 GENERAL ARRANGEMENT
 DWG No 65510/1
 SCALE 1: 50 REV. L 14/07/20

03



DIVE SUPPORT

The Curtis Marshall is a highly capable Dive Support Vessel, offering many features unusual for vessels of this size.

- 3 Diver system Onboard
- 13 Bar LP Compressor
- Inboard HP Compressor for HP bottle recharge
- 16 Bar HP system
- 3 x 175m umbilicals
- 3 integrated 200 litre LP Air receivers
- 3 x Diver CCTV inc Hard disk recording
- UPS backup for all Dive equipment
- Clearcom communications with Bridge & entire vessel
- Intergrated foothole ladder within hullform for water access
- Bespoke Integrated Container for equipment storage

Chamber	60" Twin lock DDC chamber facility
Dive control	3 diver 13 bar LP/16 bar HP system
LP Compressor	22kw Atlas Copco GA 22
HP Compressor	22kW Compair
Stored air	3 x 250l receivers LP, HP 160CuM O2, 2 x 60CuM quads, reserve air quad
CCTV & Back up	3 x Diver monitoring facility with black box recording
On Deck	Purpose built containerised system and diver recovery aid
LARS	Capability for stern operated LARS



Dive ladder can be used both sides



Capable 3 diver system



- Rescue davits port and starboard
- Fully integrated system built to IMCA D023 standard
- Can be mobilised same day
- Platform at stern for alternate diving option



04



ROV SUPPORT

The Curtis Marshall offers a stable and versatile platform for ROV survey and inspection campaigns.

With the generous deck space available ROV operations can be carried out on their own or in conjunction with the inbuilt Dive system. A 20ft container for an ROV can be fitted leaving enough space to access the deck all round.

Workstation	Capacity to accommodate ROV control centre on vessel bridge
Deployment	A-Frame Launch Crane Launch Capacity for dedicated LARS at the stern
ROV Class	Accommodates light work class such as Saab Seaeye Cougar XT ROV.

Back deck space for 20ft Container



Multiple deployment options



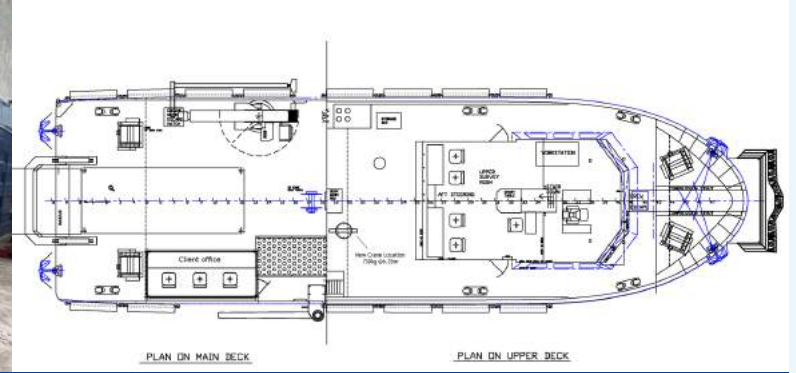
HYDROGRAPHIC, GEOPHYSICAL & UXO SURVEY

The Curtis Marshall has been proven on complex geophysical survey projects.

The vessel is extremely adaptable, and we pride ourselves on being able to provide bespoke in house engineering, to enable the vessel to carry out any task required.

With our in-house fabrication facilities we can manufacture adapters for any piece of equipment at a moments notice.

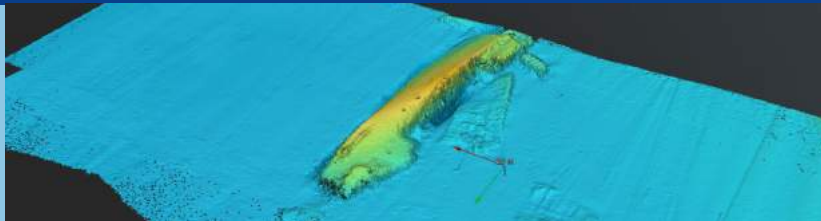
This capability along with options for towing sidescan sonars and magnetometers, makes the vessel a capable and flexible survey solution.



For survey campaigns, our offline processing office replaces the diving equipment container to maximise onboard processing capability.

PREVIOUS SURVEY SPREADS INCLUDE:

- Multibeam Echosounder
- Side Scan Sonar
- Innomar Sub Bottom Profiler
- Towed Magnetometer Array
- Environmental Sampling Equipment



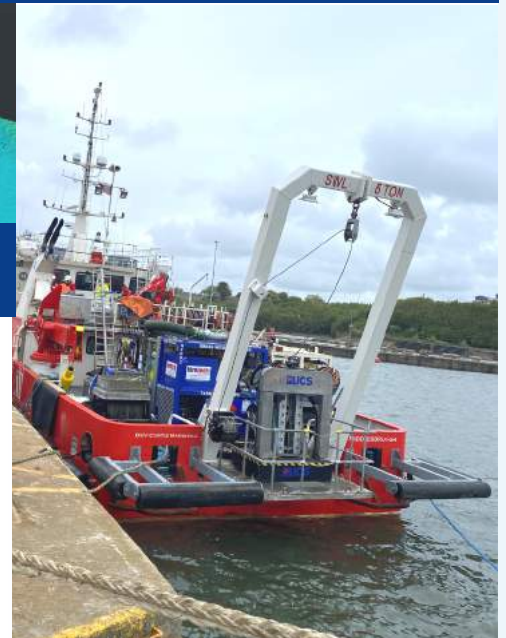
Multibeam Bathymetry acquired using a NORBIT IWMBS MBES



2 x 8m Boom Arms



3 survey pole options which can be used to mount USBL transceivers, Sub Bottom profilers and Multibeam Sonars.



6 Tonne A-Frame with 3.5T A-Frame mounted winch



05

ACCOMMODATION

Unlike many vessels of this size, DSV Curtis Marshall has been designed to comfortably accommodate 12 charterer personnel for up to 21 days.



Accommodation

12 berths for charterers, all cabins with Freesat TV and wash basins.

Communal seating area with Freesat TV.



Spacious, comfortable Galley with seating for 10, steam oven, hob, microwave, grill, bain-marie, 2 x fridges and 2 x freezers.



ONBOARD ACCOMMODATION INCLUDES:

- 18 POB including 12 for charterers
- 4 x double berths and 2 x triple berths below decks, each with sinks
- 2 double berths above deck, including double skipper's berth with en-suite.
- 4 x toilets and 4 x showers
- Spacious Galley with seating for 10
- Mess room with TV and other facilities
- Wheelhouse with 360-degree views
- 25,000 litres of fresh water on board
- Hot drink station accessible from deck
- Storage area for work/wet gear
- Laundry facilities



B MARSHALL MARINE LTD

CONTACT US

Get in touch to enquire
about availability

B Marshall Marine Ltd,
Graving Dock, Dockside Road,
Middlesbrough, TS3 8AT

Tel. 07734 230496

Web: www.bmarshallmarine.com

Email: enquiries@bmarshallmarine.co.uk



Contact Information