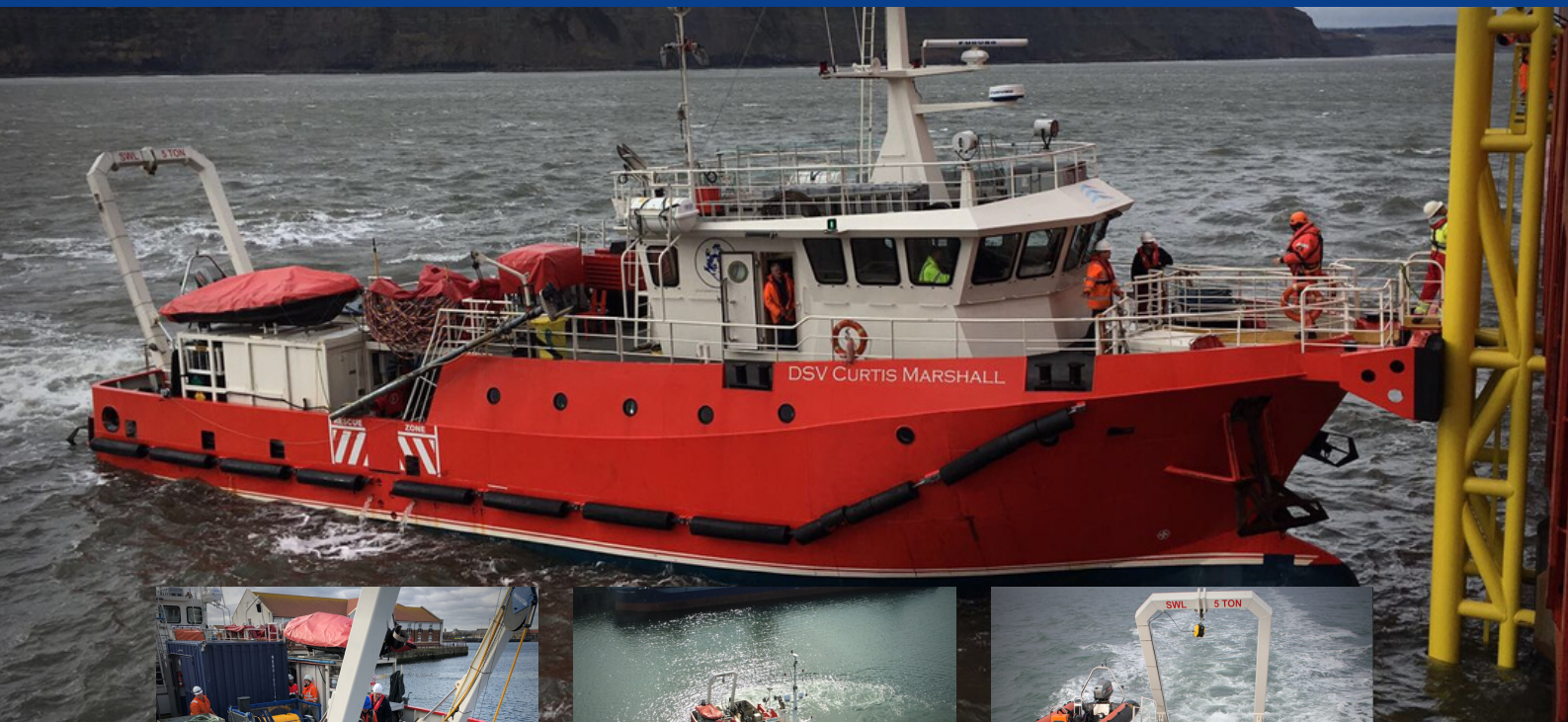


DSV Curtis Marshall

26m Multipurpose Dive Support Vessel

Built in the UK, the DSV Curtis Marshall has been designed specifically for renewable energy, dive support, survey work and general repair/maintenance. The Curtis Marshall is a highly capable Dive Support Vessel, offering many features unusual for vessels of this size.



BOW FENDER ASSY

Designed specifically for the offshore wind market, the vessel is equipped with a bow fender for engaging with the wind turbine fender.

BALLAST WATER TRANSFER SYSTEM

With a freshwater capacity of circa 21,000 litres, water can be transferred between either of the two aft tanks and the forward tank.

FULLY INTEGRATED DIVE SYSTEM

Built from the ground up, the integrated decompression chamber and dive control system allow for rapid mobilisation.

FULL WALKABOUT VESSEL CONTROL

Bespoke walkabout control system detachable from the helm position which can control all four mooring winches, steering, propulsion and bow thruster.

VESSEL PARTICULARS

Classification	MGN 280 - MCA Category 1 - 150 miles from Safe Haven
Length	26m - 24m Waterline
Beam	7.8m
Draught	2.8m
Displacement	184 tonnes light ships
Deck Area	Main deck 75m ²
Endurance	14 to 21 days

An onboard decompression chamber, integrated dive control, ballast transfer capability and a four-point mooring system provide a safe and reliable working platform. The Curtis Marshall has been proven on complex geophysical survey projects.

TANK CAPACITIES

Fuel Capacity	13.5m ³
Fresh Water	21m ³
Hydraulic Oil	500l
Grey Water	2.5m ³
Black Water	2.5m ³

ENGINES & PROPULSION

Main Engines	2 x Doosan 4V158TIH coupled to Dongi Gearbox @ 5:1 ratio
Generator 1	Doosan AD066TI coupled to MeccAlte Alternator - 110 kVA
Generator 2	Doosan AD066 coupled to MeccAlte Alternator - 45 kVA
Generator 3	ISUZU 4LEI coupled to MeccAlte - 27kVA
Hydraulic Power	2 x Engine mounted 130cc & Generator driven 147cc
Fuel System	load sensing 280 Bar system - 400l/min
Bow Thruster	2 x 5,500l main tanks with CJC fed 2,00 litre day tank
Steering System	KORT KT120 - 800kg thrust 120kw
Propulsion Control	2 x Engine mounted hydraulic pumps - Kobelt FFU control
Speed	Forward and Aft steering stations with full walkabout control
Fuel Consumption	Economical - 10 knots - Max 13 knots 100l/hr @ 11 knots

ACCOMMODATION

Unlike many vessels of this size, DSV Curtis Marshall has been designed to comfortably accommodate 12 client personnel.

- 18 POB including 12 for charterers
- 4 x twin berths and 2 x triple berths below decks, each with sinks
- 2 double berths above deck, including Double skippers berth with en suite
- 4 x toilets and 4 x showers
- Spacious Galley with seating for 8
- Mess room with TV and other facilities
- Wheelhouse with 360-degree views
- 21,000 litres of fresh water on board
- Hot drink station accessible from deck
- Storage area for work/wet gear
- Laundry facilities
- Lounge area

DECK

- Main Crane - HEILA HLRM45 SL column mounted complete with scanreco wireless control
- A Frame - 6 tonne - 2.4m internal clearance with Dinamic Oil 535-2 winch built in
- Deck Winch - Dinamic Oil S20 with 140 wire
- Crane rated to 45 T/M allowing for 5.5T@5.44m or 1.4T@16.04m

NAVIGATION

- FURUNO MFDBB NAVNET 3D MULTIFUNCTIONAL SYSTEM
- FURUNO DRS12A 12kw 6ft open array - back up stand alone 1835 19"
- FURUNO FA-150 CLASS A
- FURUNO BBDS1 - 1KW TRANSDUCER
- FURUNO NAVPILOT 700
- FURUNO NX700A with printer
- FURUNO FELCOM 18 INMARSAT C EARTH STATION
- RO WIND Ultrasonic Wind Speed & Direction
- ACR 3 Pathfinder SART, ACR Globalfix Pro 406MHz EPIRB
- FURUNO FM9800S Class A Transceiver, ICOM 323 VHF
- 2 x JOTRON TRON TR20 Portable GMDSS





DIVE SUPPORT

- 3 Diver system Onboard
- 13 Bar LP Compressor
- Inboard HP Compressor for HP bottle recharge
- 16 Bar HP system
- 3 x 175m umbilicals
- 3 integrated 200 litre LP Air receivers
- 3 x Diver CCTV inc Hard disk recording
- UPS backup for all Dive equipment
- Clearcom communications with Bridge & entire vessel
- Integrated foothole ladder within hull form for water access
- Bespoke Integrated Container for equipment storage
- Rescue davits port and starboard
- A fully integrated system built to IMCA D023 standard
- Can be mobilised the same day
- Platform at the stern for alternate diving option

Chamber	60" Twin lock DDC chamber facility
Dive control	3 diver 13 bar LP/16 bar HP system
LP Compressor	22kw Atlas Copco GA 22
HP Compressor	22kW Compair
Stored air	3 x 250l receivers LP, HP 160CuM O2, 2 x 60CuM quads, reserve air quad
CCTV & Back up	3 x Diver monitoring facility with black box recording
On Deck	Purpose built containerised system and diver recovery aid
LARS	Capability for stern operated LARS

HYDROGRAPHIC SURVEY

The vessel is extremely adaptable, and we pride ourselves on being able to provide bespoke in house engineering, to enable the vessel to carry out any task required.

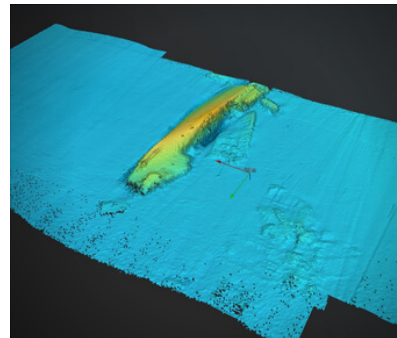
With our in-house fabrication facilities we can manufacture adapters for any piece of equipment at a moments notice.

This capability along with options for towing sidescan sonars and magnetometers, makes the vessel a capable and flexible survey solution.

The two pole mounts can be used to mount USBL transceivers, Sub Bottom profilers and Multibeam Sonars.

Typical survey spread:

- Multibeam echosounder
- Side Scan Sonar
- Innomar Sub bottom Profiler
- Towed Magnetometer Array
- Environmental Sampling Equipment



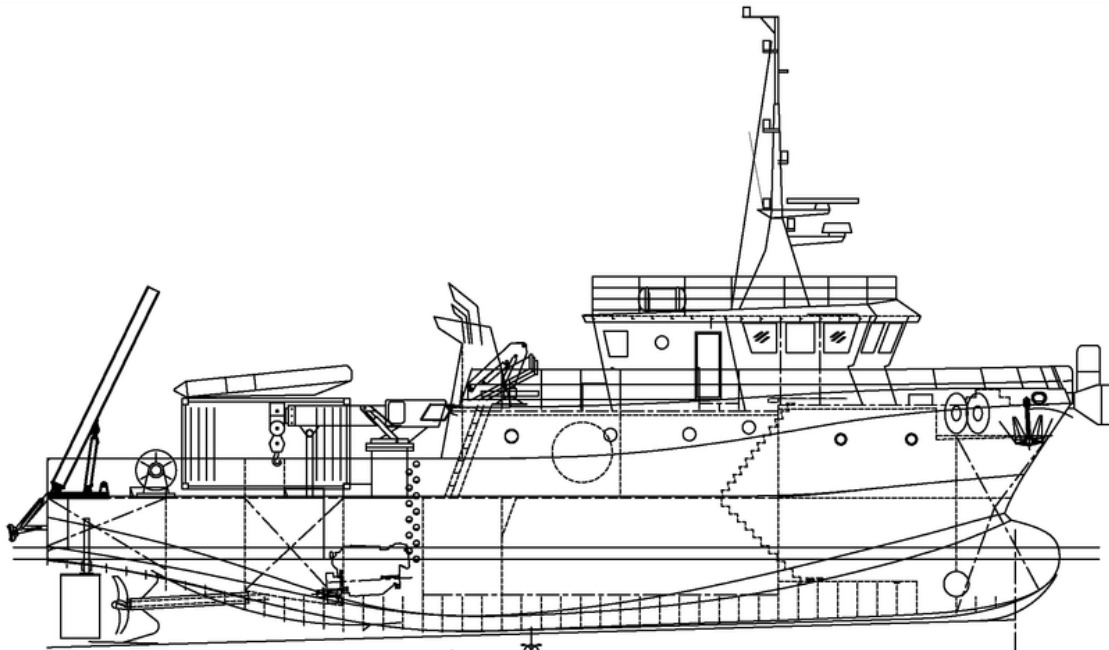
Get availability updates



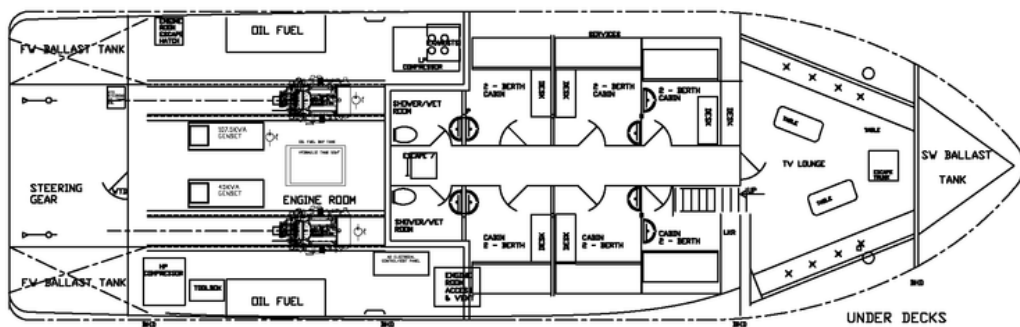
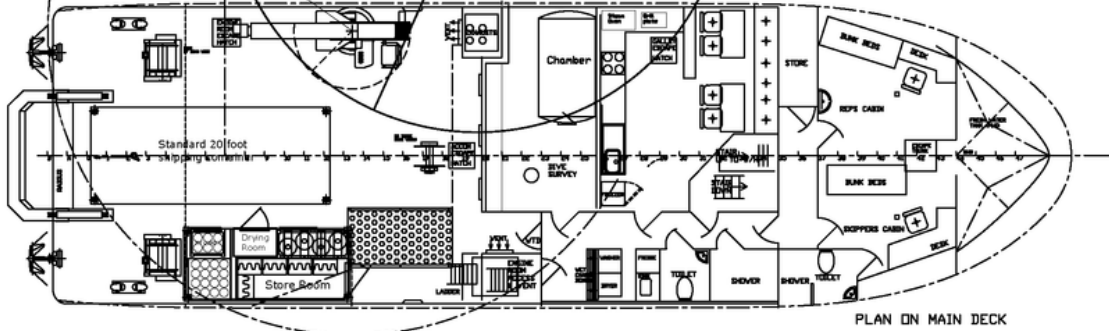
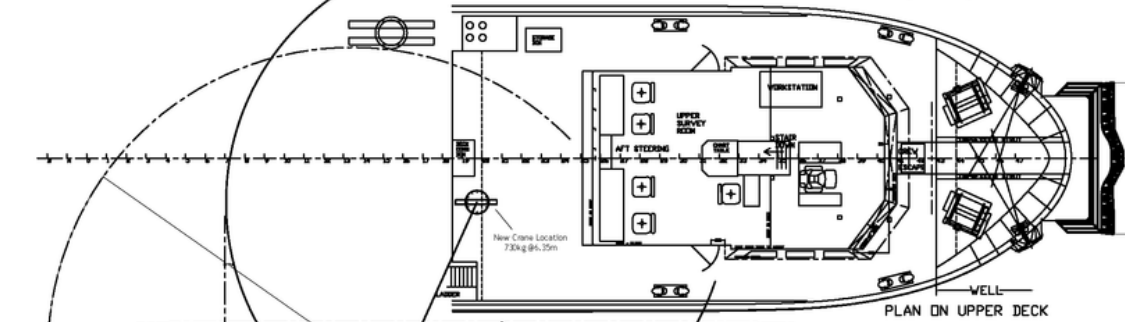
B Marshall Marine Ltd

Graving Dock, Dockside Road,
Middlesbrough, TS3 8AT

info@bmarshallmarine.co.uk
+44(0)1642 211234
www.bmarshallmarine.com



S C McALLISTER & Co Ltd [NAVAL ARCHITECTS] Tel: 01904 466 158 Email: scm.design@virgin.net



PRINCIPAL DIMENSIONS
LENGTH OVERALL 25.8 METRES
LOAD LINE LENGTH 23.95 METRES (ON 0.85D VL)
BREADTH (MLD) 7.7 METRES
DEPTH (MLD) 3.6 METRES
DRAUGHT (APPRDX) 2.8 METRES
UNDER 24 METRES LOAD LINE LENGTH

This drawing is copyright and must not be copied or used for any purpose without the express permission of S.C. McAllister & Co. Ltd.

26x7.7 METRE DIVE SUPPORT VESSEL For: B Marshall Marine Ltd
GENERAL ARRANGEMENT
DWG No 65510/1
SCALE 1: 50 REV. L 14/07/20